

# VTT | Knobs with solid section

Technopolymer, easy cleaning



## MATERIAL

Glass-fibre reinforced polyamide based (PA) technopolymer, black colour, matte finish.

## STANDARD EXECUTIONS

- **VTT-B**: brass boss, threaded blind hole.
- **VTT-SST**: AISI 304 stainless steel boss, threaded blind hole.
- **VTT-p**: zinc-plated steel threaded stud, chamfered flat end according to UNI 947 : ISO 4753 (see Technical data on page A-11).
- **VTT-SST-p**: AISI 304 stainless steel threaded stud, chamfered flat end according to UNI 947 : ISO 4753 (see Technical data on page A-11).

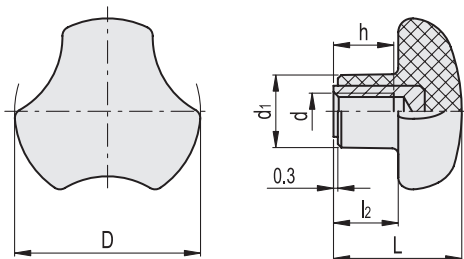
## FEATURES AND APPLICATIONS

The three-lobe shape with large recesses is particularly ergonomic also for smaller knobs, ensuring an effective grip even with work gloves. The design without rear cavities, generally suitable for reducing thickness, prevents unhealthy residues from depositing, ensuring easy cleaning. Particularly suitable for applications on machines and equipment whose parts must be frequently cleaned by using water jets or steam.



ELESA Original design

Conversion Table	
1 mm = 0.039 inch	
D	
mm	inch
25	0.98
32	1.25
40	1.56
50	1.95



VTT-B  
VTT-SST

## VTT

Code	Description	D	d6H	L	d1	l2	h	⚖️
167105	VTT.25-B-M4	25	M4	20	12	10	10	10
167106	VTT.25-B-M5	25	M5	20	12	10	10	9
167107	VTT.25-B-M6	25	M6	20	12	10	10	8
167216	VTT.32-B-M6	32	M6	23	14	11.5	10	19
167217	VTT.32-B-M8	32	M8	23	14	11.5	13	18
167335	VTT.40-B-M6	40	M6	27	16	13.5	12	25
167336	VTT.40-B-M8	40	M8	27	16	13.5	13	23
167465	VTT.50-B-M8	50	M8	30	19	15	15	33
167466	VTT.50-B-M10	50	M10	30	19	15	17	36

## VTT-SST

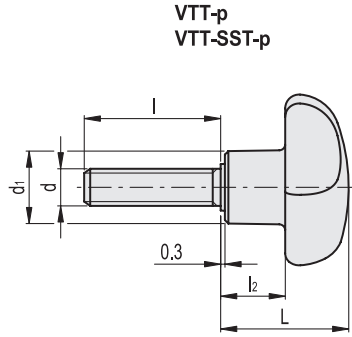
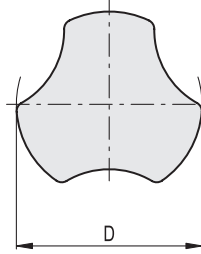
Code	Description	D	d6H	L	d1	l2	h	⚖️
167116	VTT.25-SST-M5	25	M5	20	12	10	10	9
167226	VTT.32-SST-M6	32	M6	23	14	11.5	10	19
167346	VTT.40-SST-M8	40	M8	27	16	13.5	13	24
167476	VTT.50-SST-M10	50	M10	30	19	15	17	37





**Conversion Table**  
1 mm = 0.039 inch

D	
mm	inch
25	0.98
32	1.25
40	1.56
50	1.95



VTT-p  
VTT-SST-p

VTT-p

METRIC

Code	Description	D	d6g	L	d1	l	l2	Δ
167131	VTT.25-p-M4x6	25	M4	20	12	6	10	6
167132	VTT.25-p-M4x10	25	M4	20	12	10	10	7
167151	VTT.25-p-M5x10	25	M5	20	12	10	10	8
167152	VTT.25-p-M5x16	25	M5	20	12	16	10	9
167171	VTT.25-p-M6x10	25	M6	20	12	10	10	9
167172	VTT.25-p-M6x16	25	M6	20	12	16	10	11
167173	VTT.25-p-M6x20	25	M6	20	12	20	10	12
167174	VTT.25-p-M6x25	25	M6	20	12	25	10	14
167175	VTT.25-p-M6x30	25	M6	20	12	30	10	16
167176	VTT.25-p-M6x35	25	M6	20	12	35	10	18
167252	VTT.32-p-M6x16	32	M6	23	14	16	11.5	15
167253	VTT.32-p-M6x20	32	M6	23	14	20	11.5	16
167255	VTT.32-p-M6x25	32	M6	23	14	25	11.5	17
167254	VTT.32-p-M6x30	32	M6	23	14	30	11.5	19
167257	VTT.32-p-M6x35	32	M6	23	14	35	11.5	21
167258	VTT.32-p-M6x40	32	M6	23	14	40	11.5	23
167259	VTT.32-p-M6x45	32	M6	23	14	45	11.5	25
167273	VTT.32-p-M8x20	32	M8	23	14	20	11.5	18
167274	VTT.32-p-M8x25	32	M8	23	14	25	11.5	20
167275	VTT.32-p-M8x30	32	M8	23	14	30	11.5	22
167276	VTT.32-p-M8x35	32	M8	23	14	35	11.5	24
167351	VTT.40-p-M6x10	40	M6	27	16	10	13.5	20
167353	VTT.40-p-M6x16	40	M6	27	16	16	13.5	22
167355	VTT.40-p-M6x20	40	M6	27	16	20	13.5	24
167357	VTT.40-p-M6x25	40	M6	27	16	25	13.5	26
167359	VTT.40-p-M6x30	40	M6	27	16	30	13.5	28
167361	VTT.40-p-M6x40	40	M6	27	16	40	13.5	31
167371	VTT.40-p-M8x20	40	M8	27	16	20	13.5	27
167372	VTT.40-p-M8x25	40	M8	27	16	25	13.5	29
167373	VTT.40-p-M8x30	40	M8	27	16	30	13.5	31
167374	VTT.40-p-M8x35	40	M8	27	16	35	13.5	33
167375	VTT.40-p-M8x40	40	M8	27	16	40	13.5	35
167377	VTT.40-p-M8x50	40	M8	27	16	50	13.5	39
167380	VTT.40-p-M8x55	40	M8	27	16	55	13.5	41
167378	VTT.40-p-M8x60	40	M8	27	16	60	13.5	43
167379	VTT.40-p-M8x70	40	M8	27	16	70	13.5	46
167443	VTT.50-p-M8x20	50	M8	30	19	20	15	38
167445	VTT.50-p-M8x25	50	M8	30	19	25	15	40
167447	VTT.50-p-M8x30	50	M8	30	19	30	15	42
167449	VTT.50-p-M8x40	50	M8	30	19	40	15	46
167451	VTT.50-p-M8x45	50	M8	30	19	45	15	48
167453	VTT.50-p-M8x50	50	M8	30	19	50	15	51
167455	VTT.50-p-M8x60	50	M8	30	19	60	15	56
167481	VTT.50-p-M10x20	50	M10	30	19	20	15	46
167482	VTT.50-p-M10x25	50	M10	30	19	25	15	51
167483	VTT.50-p-M10x30	50	M10	30	19	30	15	56
167484	VTT.50-p-M10x35	50	M10	30	19	35	15	61
167485	VTT.50-p-M10x40	50	M10	30	19	40	15	66
167486	VTT.50-p-M10x45	50	M10	30	19	45	15	71
167488	VTT.50-p-M10x55	50	M10	30	19	55	15	81

VTT-SST-p

INOX STAINLESS STEEL METRIC

Code	Description	D	d6g	L	d1	l	l2	Δ
167161	VTT.25-SST-p-M5x10	25	M5	20	12	10	10	8
167162	VTT.25-SST-p-M5x16	25	M5	20	12	16	10	9
167261	VTT.32-SST-p-M6x10	32	M6	23	14	10	11.5	14
167262	VTT.32-SST-p-M6x16	32	M6	23	14	16	11.5	15
167263	VTT.32-SST-p-M6x20	32	M6	23	14	20	11.5	16
167265	VTT.32-SST-p-M6x25	32	M6	23	14	25	11.5	17
167264	VTT.32-SST-p-M6x30	32	M6	23	14	30	11.5	19
167381	VTT.40-SST-p-M8x20	40	M8	27	16	20	13.5	28
167382	VTT.40-SST-p-M8x25	40	M8	27	16	25	13.5	30
167383	VTT.40-SST-p-M8x30	40	M8	27	16	30	13.5	32
167385	VTT.40-SST-p-M8x40	40	M8	27	16	40	13.5	36
167491	VTT.50-SST-p-M10x20	50	M10	30	19	20	15	47
167492	VTT.50-SST-p-M10x25	50	M10	30	19	25	15	52
167493	VTT.50-SST-p-M10x30	50	M10	30	19	30	15	57
167495	VTT.50-SST-p-M10x40	50	M10	30	19	40	15	67
167496	VTT.50-SST-p-M10x45	50	M10	30	19	45	15	72
167498	VTT.50-SST-p-M10x55	50	M10	30	19	55	15	82